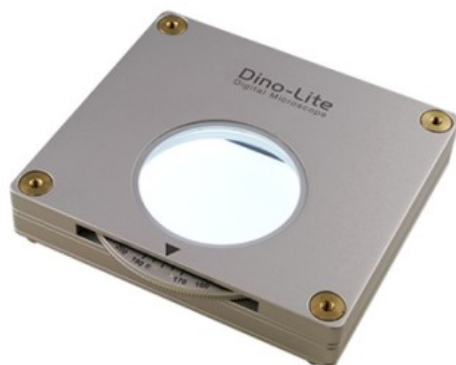


BL-ZW2

Značka:

Kód produktu: BL-ZW2



Short Description

Polarized Backlight

Popis

Equipped with an adjustable and also a removable polarizer, BL-ZW2 backlight offers parallel to cross-polarization and can transmit plain light by removing the polarizer. BL-ZW2 is designed to image birefringent properties for distinguishing anisotropic from isotropic materials, detecting defects, or examining internal stresses, making it suitable for industry, petrography, and biology applications.

Specifikace

| | |
|------------------|--|
| Lighting | |
| Polarizer | Yes (removable) |
| Compatibility | |
| Compatible with: | All Dino-Lite models |
| Housing | |
| Dimensions | 10 cm (L) x 9 cm (W) x 2 cm (H) |
| Weight | 315 g |
| Features | |
| ESD safe | No |
| Information | |
| Package contents | Backlight pack, USB cable, power adapter |

| | |
|----------------------|---------------------------|
| Warranty information | 2 years European warranty |
| Accessory range: | Light and control |
| Price range | €250,00 - €400,00 |

Product Gallery

