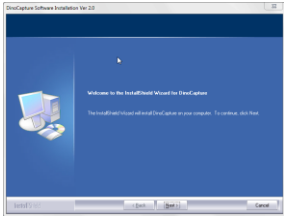


# DinoCapture 2.0 BETA: Quick Installation Guide

**1.** Power on your PC and start the DinoCapture 2.0 BETA installation Wizard.

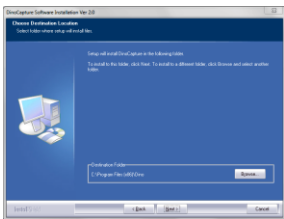
**2. DO NOT** connect the USB cable of the Dino-Lite Digital Microscope to the PC before installing the software



**3.** Start the installation by double clicking on the installation package. Click “Next” and the Install Shield Wizard for the DinoCapture 2.0 will start. (The “Open File- Security Warning” may appear on some systems. Select “Run”).

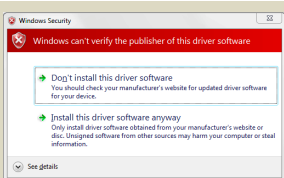


**4.** Read the User License Agreement. If agree, press “Yes” to continue or “No” to stop the installation.

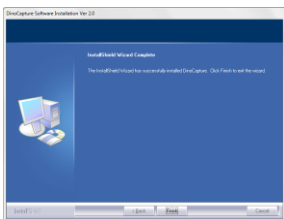


**5.** Select a destination folder for the DinoCapture 2.0 software. When done press “Next”

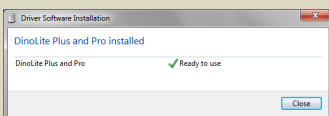
**6.** Click “Install” to start installing the software.



**7.** When the Windows Security warning message appears, click “Install this driver software anyway”.



**8.** When the installation is complete, selecting “Finish” completes the software installation.



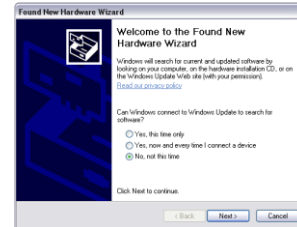
**9.** Now plug in the Dino-Lite to start the Driver Software Installation, wait until it says **Ready to Use** before starting DinoCapture 2.0.

**10.** Start DinoCapture 2.0 by double clicking the desktop icon.\*

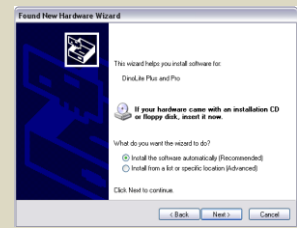
**\*Windows XP Users continue reading steps 11-16 for Driver Software Installation instructions-Found New Hardware Wizard.**



**11.** Plug in the Dino-Lite to start the Found New Hardware Wizard.



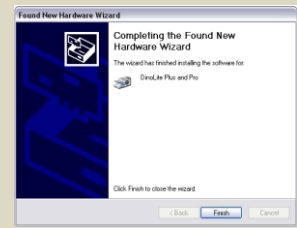
**12.** Select the “No, not this time” radial button. And then press “Next”.



**13.** Select “Install the software automatically” radial button then press “Next”



**14.** When the Windows Logo testing warning appears select “Continue Anyway”.



**15.** Click “Finish” to complete the installation.

**16.** You can now use the Dino-Lite with the DinoCapture software.